

1801 Briv

Aluminium - Dome head
2.4 mm (3/32") - 6.0 mm (.236")

Features

- Bulbed tail and foreshortening of the fastener during installation ensures consistent high clamp and shear
- Bulbed tail and large head style provide a large bearing area for soft materials
- Tapered tail for ease of hole entry
- Expands radially during installation to ensure maximum hole fill
- Lower in-place costs than welding or nail rivets
- Can be used to assemble many materials including metal, plastic and aluminium alloy
- Can be bowl fed for larger volume applications using automated equipment

Material

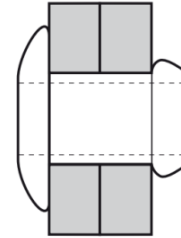
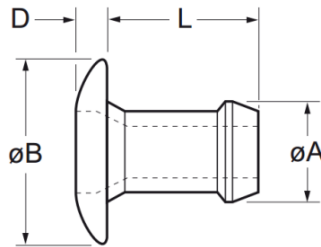
- Aluminium alloy (5% Mg), natural



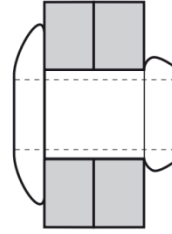
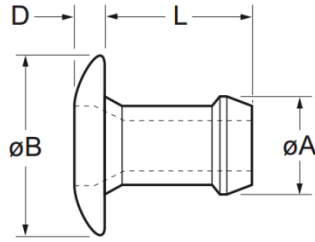
Other available options on request:

- **Anodized, dyed red finish** - Replace part no. **01801** with **01804**
- **2.5% Mg aluminium alloy** - Replace part no. **01801** with **01861**

For assistance, contact your nearest [Gripwell](#) team



Part No.	Size ø	Grip Range		Hole Size		øB max.	D max.	L max.	øA max.	Fasteners per pod ± 1	Shear (typical) kN	Tension (typical) kN
		min.	max.	min.	max.							
01801-00304	2.4 (3/32")	1.14	2.42	2.36	2.44	4.11	0.89	3.98	2.35	64	0.27	0.44
01801-00306		2.15	3.43					5.00		52		
01801-00308		3.17	4.45					6.02		44		
01801-00310		4.19	5.47					7.04		38		
01801-00312		5.20	6.48					8.05		34		
01801-00314		6.22	7.50					9.07		30		
01801-00315		6.73	8.00					9.57		28		
01801-00316		7.24	8.51					10.08		27		
01801-00317		7.75	9.02					10.59		26		
01801-00403	3.2 (1/8")	0.64	1.91	3.26	3.34	6.53	0.99	3.86	3.14	59	0.76	1.31
01801-00404		1.14	2.42					4.37		58		
01801-00405		1.65	2.87					4.87		50		
01801-00406		2.15	3.43					5.39		48		
01801-00408		3.17	4.45					6.41		42		



Part No.	Size ø	Grip Range		Hole Size		øB max.	D max.	L max.	øA max.	Fasteners per pod ± 1	Shear (typical) kN	Tension (typical) kN
		nom.	min.	max.	min.							
01801-00410	3.2 (1/8")		4.19	5.47	3.26	3.34	6.53	0.99	3.14	37	0.76	1.31
01801-00412			5.20	6.48								
01801-00414			6.22	7.50								
01801-00416			7.24	8.51								
01801-00505	4.0 (5/32")		1.57	2.93	3.97	4.04	8.18	0.99	3.88	52	1.14	1.74
01801-00506			2.15	3.43								
01801-00507			2.66	3.94								
01801-00509			3.68	4.96								
01801-00511			4.69	5.97								
01801-00513			5.71	6.99								
01801-00515			6.73	8.00								
01801-00517			7.75	9.02								
01801-00606	4.8 (3/16")		1.65	3.30	4.85	4.93	9.71	1.17	4.77	46	1.51	2.74
01801-00607			2.03	3.94								
01801-00609			3.68	5.21								
01801-00611			4.95	6.48								
01801-00613			6.22	7.75								
01801-00615			7.49	9.02								
01801-00617			8.76	10.29								
01801-00619			10.03	11.56								
01801-06007	6.0 (.236")		2.66	3.94	5.94	6.02	11.55	1.35	5.90	37	1.69	3.29
01801-06009			3.68	4.95								
01801-06011			4.70	5.96								
01801-06013			5.71	6.98								
01801-06015			6.73	6.99								
01801-06017			7.74	9.01								

Assembly Applications

- Automotive
- Electronic components
- Sheet metal
- Electrical engineering
- Domestic appliances
- Furniture
- General light fabrication



We are proud to be Avdel's authorized distributor of over 30 years